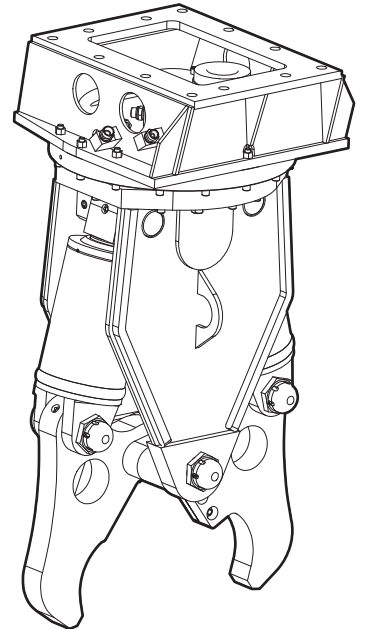


Spare parts list

Hydraulic demolition cutter

Valid from serial number 101



Contents

General information	5
Spare parts list	6
Hydraulic demolition cutter	6
Hydraulic cylinder	8
Cutter jaw	10
Upper part complete	12
Rotary transmission	14
Tightening torques	16
Accessories	17
Hydraulic hoses	17
Optional equipment	17
Kits	18
Label kit	18
Dimensions	19
Dimensions CC 650	19

General information

This spare parts list applies to the following:

Part number	Description
3363 1042 21	Hydraulic demolition cutter CC 650

Use only authorized parts. Any damage or malfunction caused by the use of unauthorized parts is not covered by Warranty or Product Liability. Any unauthorized use or copying of the contents or any part thereof is prohibited. This applies in particular to trademarks, model denominations, part numbers, and drawings.

Instructions for use

This spare parts list contains no safety regulations and is merely intended to assist in the ordering of spare parts.

For information about operating, servicing, or repairing, the relevant Safety and operating instructions must be consulted at all costs.

Please observe the safety instructions listed in the relevant Safety and operating instructions!

Instructions of ordering

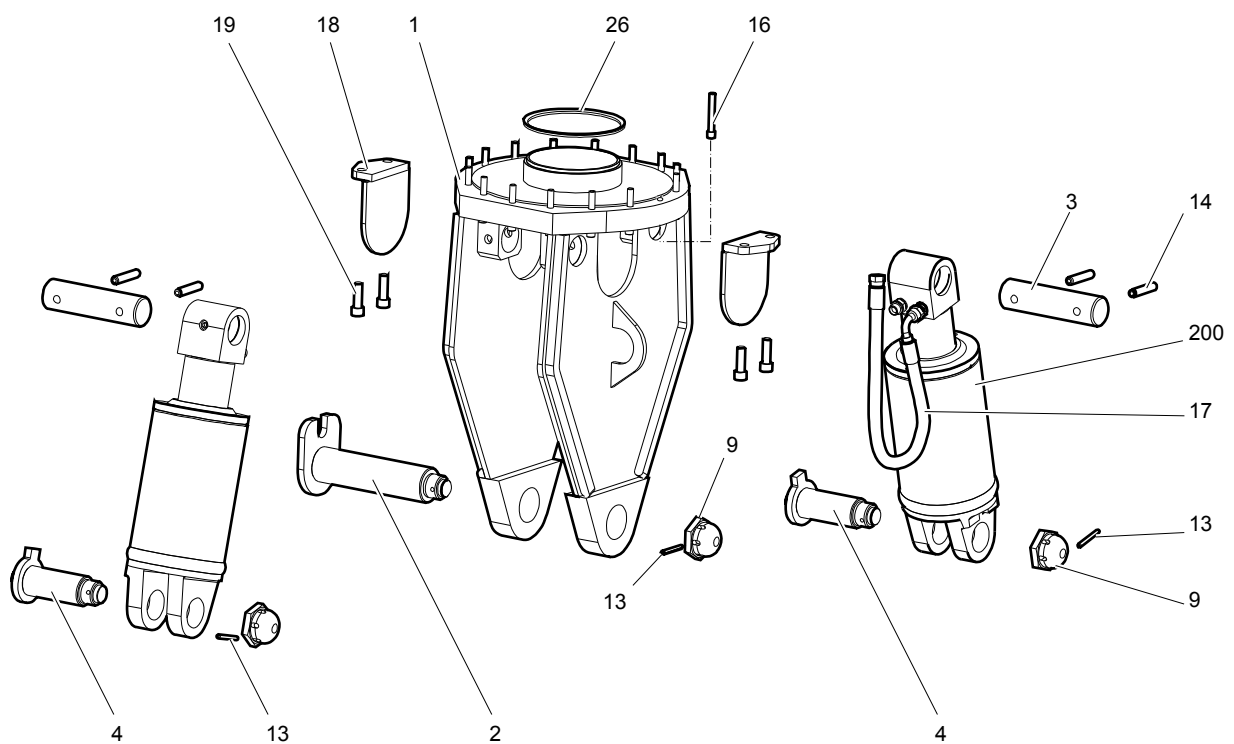
It is essential to indicate the serial number of the hydraulic attachment when ordering spare parts!

Determine the quantity of individual parts which are required and need to be ordered. The order must indicate the following details:

- full identification code of the hydraulic attachment
- required quantity
- part number
- description

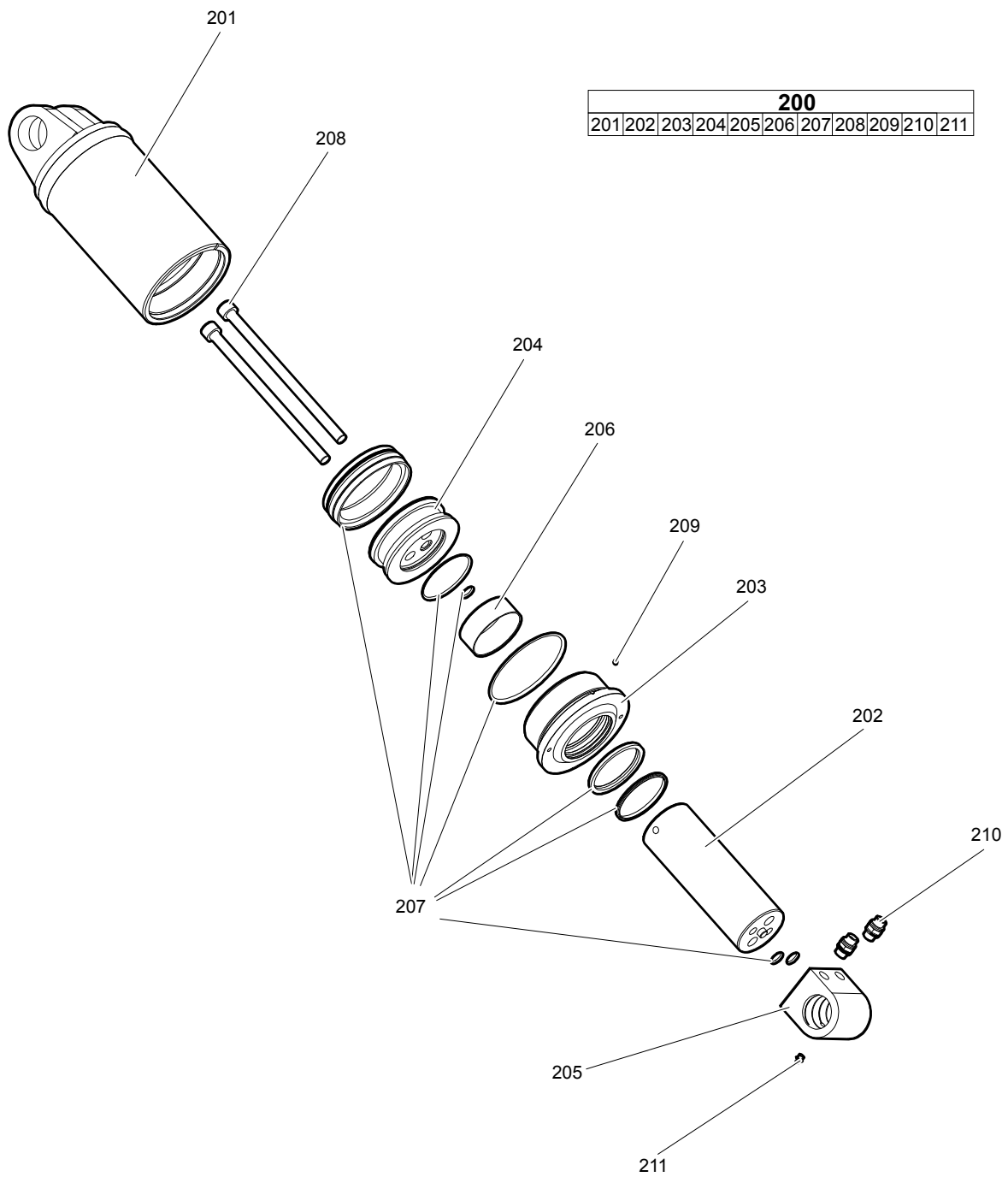
Spare parts list

Hydraulic demolition cutter



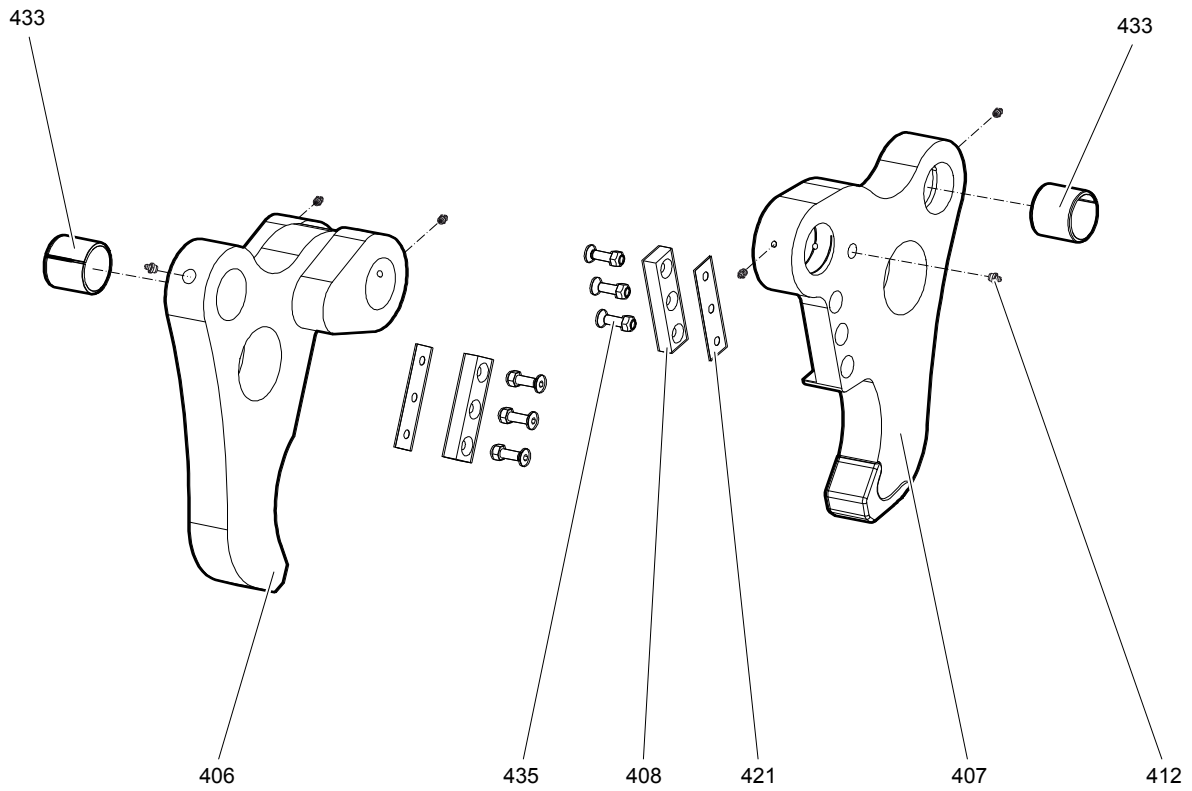
No.	Description	Remark	Quantity	Part number
1	Housing		1	3363 1106 00
2	Bolt		1	3363 1106 01
3	Bolt		2	3363 1106 02
4	Bolt		2	3363 1106 03
9	Hexagon nut		3	3363 1106 14
13	Pin		3	3363 1106 18
14	Pin		4	3363 1106 19
16	Allen screw kit		1	3363 1106 22
17	Hydraulic hose kit (housing)		1	3363 1106 30
18	Cover sheet		2	3363 1106 31
19	Allen screw		4	3363 1106 32
26	V-ring		1	3363 1106 33
200	Hydraulic cylinder complete	see separate chapter	2	3363 1106 04

Hydraulic cylinder



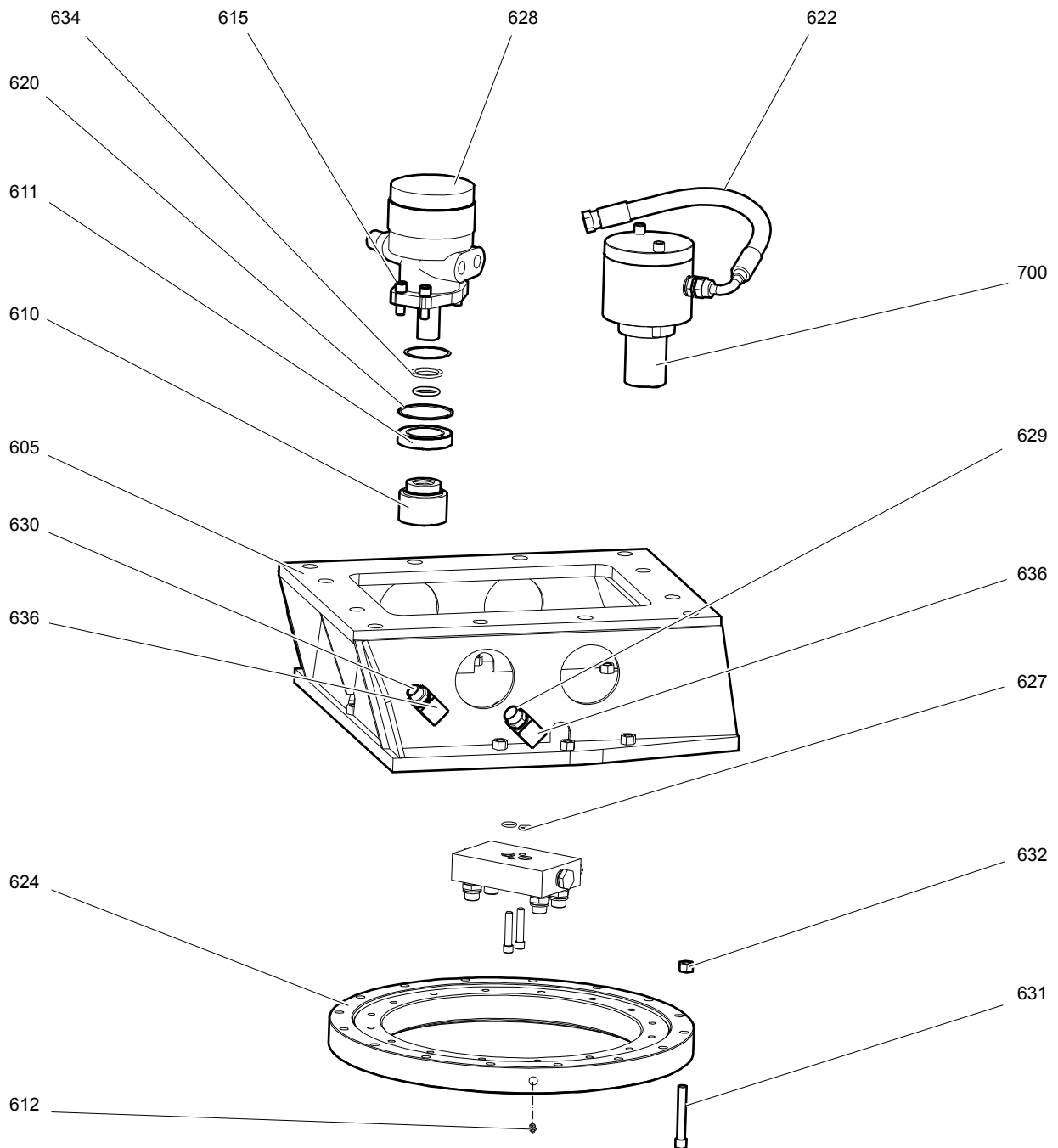
No.	Description	Remark	Quantity	Part number
200(201-211)	Hydraulic cylinder		2	3363 1106 04
201	Cylinder body		1	3363 1106 37
202	Piston rod		1	3363 1106 38
203	Guide rod		1	3363 1106 39
204	Piston		1	3363 1106 40
205	Cylinder shaft head		1	3363 1106 41
206	Slide bearing		1	3363 1106 42
207	Seal kit		1	3363 1106 43
208	Bolt		2	3363 1106 44
209	Screw		1	3363 1106 45
210	Fitting		2	3363 1106 46
211	Grease nipple		1	3363 1106 57

Cutter jaw



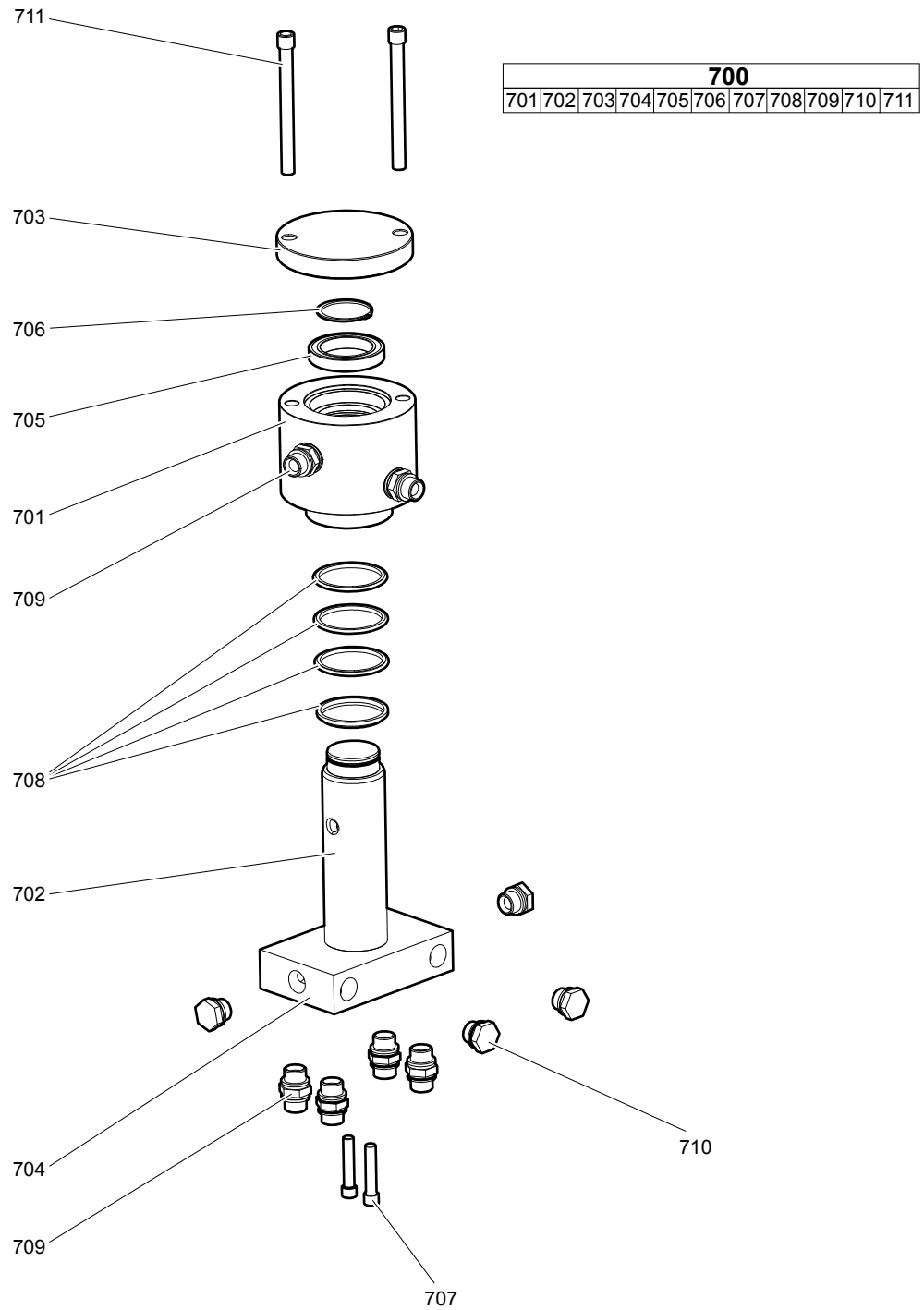
No.	Description	Remark	Quantity	Part number
406	Cutter jaw		1	3363 1106 10
407	Cutter jaw		1	3363 1106 12
408	Cutter blade kit		1	3363 1106 13
412	Grease nipple		6	3363 1106 05
421	Shim		1	3363 1106 36
433	Bearing bush		2	3363 1106 11
435	Screw and nut kit for cutter blade		1	3363 1106 25

Upper part complete



No.	Description	Remark	Quantity	Part number
605	Upper part		1	3363 1106 06
610	Gear		1	3363 1106 16
611	Bearing		1	3363 1106 17
612	Grease nipple		1	3363 1106 05
615	Allen screw		4	3363 1106 21
620	Washer		1	3363 1106 34
622	Hose kit upper part		1	3363 1106 29
624	Swivel ring		1	3363 1106 15
627	Seal		2	3363 1106 28
628	Hydraulic motor		1	3363 1106 07
629	Fitting open/close		2	3363 1106 08
630	Fitting rotate		2	3363 1106 09
631	Allen screw kit upper part		1	3363 1106 23
632	Nut kit upper part		1	3363 1106 24
634	Seal kit hydraulic motor		1	3363 1106 35
636	Connector block		4	3363 1106 59
700	Rotary transmission	see separate chapter	1	3363 1106 27

Rotary transmission



No.	Description	Remark	Quantity	Part number
700(701-711)	Rotary transmission		1	3363 1106 27
701	Stator		1	3363 1106 47
702	Rotor		1	3363 1106 48
703	Cover		1	3363 1106 49
704	Connection block		1	3363 1106 50
705	Bearing		1	3363 1106 51
706	Circlip		1	3363 1106 52
707	Allen screw		2	3363 1106 53
708	Seal kit		1	3363 1106 54
709	Fitting		6	3363 1106 55
710	Threaded plug		4	3363 1106 56
711	Allen screw		2	3363 1106 20

Tightening torques

No.	Description	Tightening torque	Remark
9	Cap nut	200 Nm	after tighten turn counter clockwise (min. 5 degrees) until plint pin can be placed
15	Allen screw	130 Nm	
16	Allen screw	130 Nm	
17	Hydraulic hose cylinder/rotary connection block	120 + 12 Nm	Lubricate thread with hydraulic oil before screwing in (Threads of stainless steel fittings must be lubricated with EO-NIROMONT). Screw until handtight. Then tighten according to chart. Tightening torques are based on lubricated carbon steel zinc plated components and counterpart made of steel.
19	Allen screw	300 Nm	
35	Allen screw	130 Nm	
208	Bolt	650 Nm	
209	Screw	2 Nm	
622	Hydraulic hose rotary transmission	120 + 12 Nm	Lubricate thread with hydraulic oil before screwing in (Threads of stainless steel fittings must be lubricated with EO-NIROMONT). Screw until handtight. Then tighten according to chart. Tightening torques are based on lubricated carbon steel zinc plated components and counterpart made of steel.
622	Hydraulic hose hydraulic motor	45 + 4 Nm	Lubricate thread with hydraulic oil before screwing in (Threads of stainless steel fittings must be lubricated with EO-NIROMONT). Screw until handtight. Then tighten according to chart. Tightening torques are based on lubricated carbon steel zinc plated components and counterpart made of steel.
631	Allen screw	130 Nm	
707	Allen screw	50 Nm	
709	Fitting	150 Nm	
710	Threaded plug	150 Nm	
711	Allen screw	90 Nm	
-	Hydraulic hose inner connection »open/close«	250 + 25 Nm	Lubricate thread with hydraulic oil before screwing in (Threads of stainless steel fittings must be lubricated with EO-NIROMONT). Screw until handtight. Then tighten according to chart. Tightening torques are based on lubricated carbon steel zinc plated components and counterpart made of steel.
-	Hydraulic hose inner connection »Turn gripper«	90 + 9 Nm	Lubricate thread with hydraulic oil before screwing in (Threads of stainless steel fittings must be lubricated with EO-NIROMONT). Screw until handtight. Then tighten according to chart. Tightening torques are based on lubricated carbon steel zinc plated components and counterpart made of steel.

Accessories

Hydraulic hoses

Open - Close

Description	Remark	Quantity	Part number
Hydraulic Hose	I.D. 15 (0.59 in.) both ends M 30 x 2, conical seal 24° length 2000 mm (78.4 in.)	2	3363 1064 95

Rotation

Description	Remark	Quantity	Part number
Hydraulic Hose	I.D. 8 (3/8 in.) both ends M 20x1.5, conical seal 24°, length 2000 mm (78.4 in.)	2	3363 0945 40

Optional equipment

Description	Remark	Quantity	Part number
Cutter grease cartridge	12 x 400 g (0.88 lbs)	1	3363 0949 14
Grease gun		1	0909 1071 00
Adapter plate matching the carrier	Consult the Atlas Copco Customer Center/Dealer in your area.	1	-
Base plate with threaded inserts		1	3363 0997 97
Bolt kit		1	3363 0945 37
Base plate with through borings		1	3363 1006 95
Bolt kit		1	3363 0945 74
Allen key	19 mm for bolt kit	1	3360 2092 53

Kits

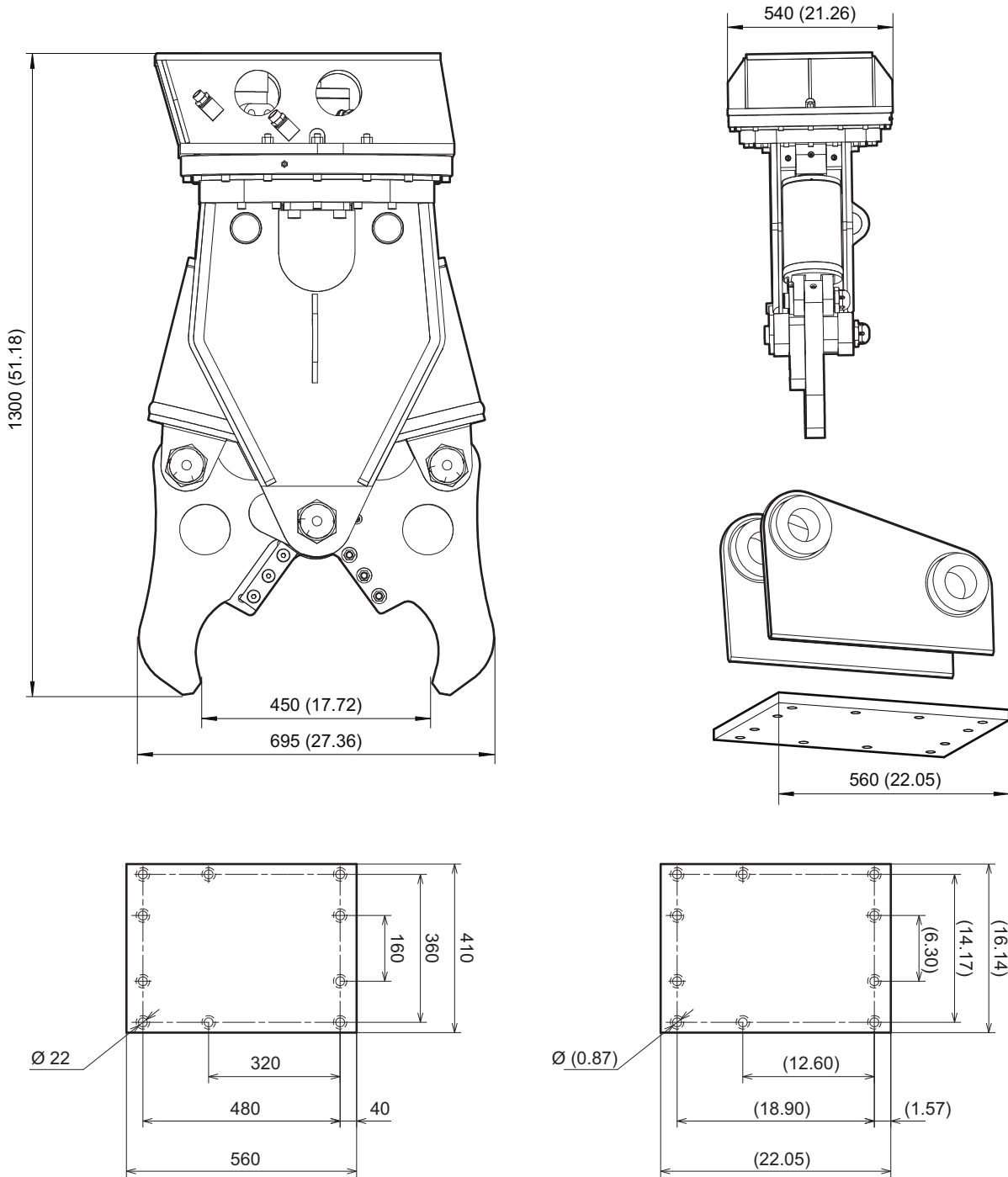
Label kit

No.	Description	Remark	Quantity	Part number
	Label kit		1	3363 1063 28

Dimensions

Dimensions CC 650

mm (in.)



Any unauthorized use or copying of the contents or any part thereof is prohibited.
This applies in particular to trademarks, model denominations, part numbers, and
drawings.

© 2010 Atlas Copco Construction Tools GmbH | No. 3390 7503 01 | 2010-06-21

Atlas Copco

www.atlascopco.com